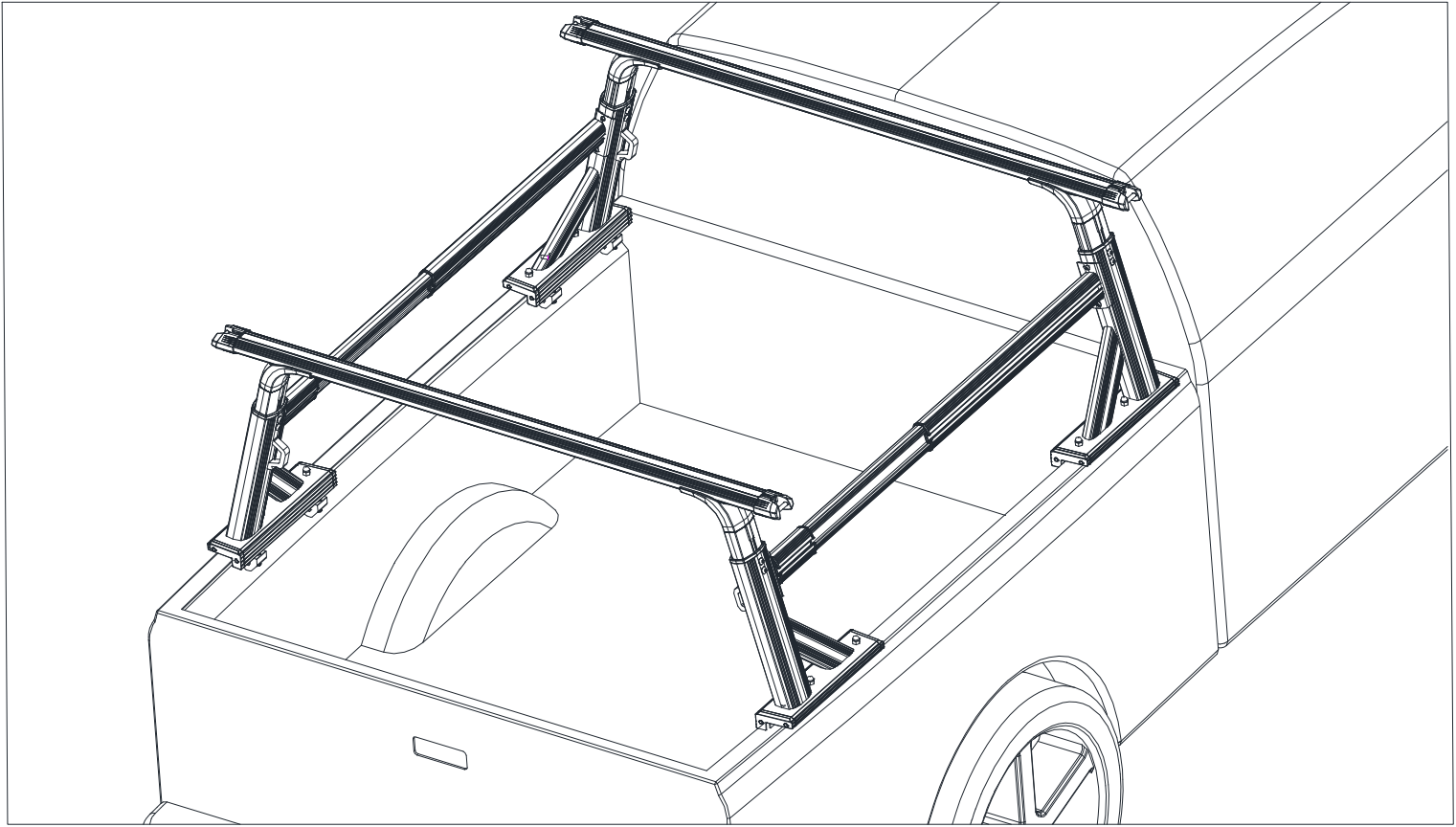


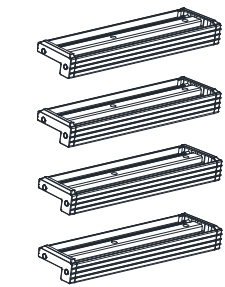
# Fitting Instruction

## Note and Products Care :

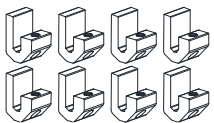
- 1、 All the pictures in the instructions are for reference only, pictures may different from real objects, but the installation method is the same.
2. Read Carefully the instruction sheet before installing. Take good care of your vehicle when installing to prevent any scratch.
3. Please check regularly if all fittings connected to the car are loose, to ensure safe use.



## Parts List



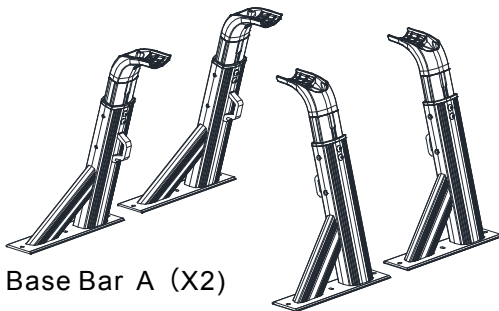
Fixed Base (X4)



Base Bracket (X8)



the cap of cross-bar (X4)



Base Bar A (X2)

Base Bar B (X2)



Side Bar (X2)



Cross Bar (X2)



10-13mm Hexagon Wrench (X1)



M12/M10/M8/M6 Hexagon Head Wrench (X1)



M6x20mm Side Bar Screw (X8)



cross-bar screw (X4)



M6 Side Bar Screw Washer (X20)



M6 Side Bar Screw Spring Washer (X20)



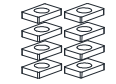
M12x50mm Base Screw (X8)



M12 Base Screw Spring Washer (X8)



M8 cross bar screw square washer (X4)



M12 Base Screw Square Washer (X8)



M6 Base Bar Masked Nut (X12)



M8x20mm Cross Bar Screw (X8)



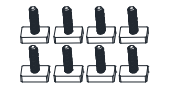
M8x25mm Base Bar Screw (X12)



M8 Cross Bar Screw Washer (X20)

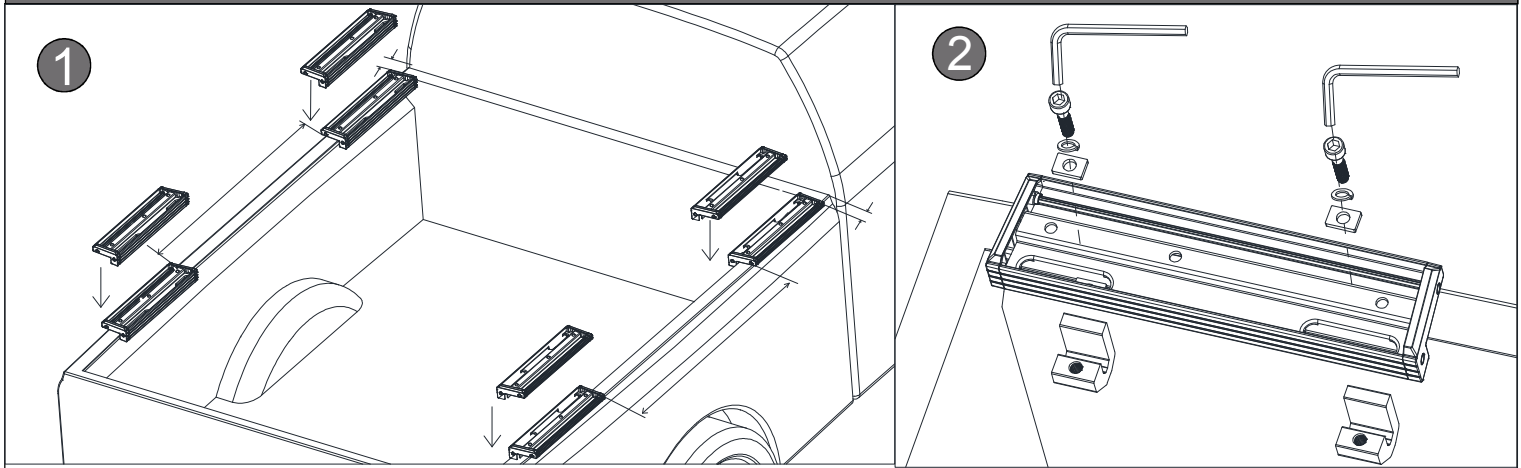


M8 Cross Bar Screw Spring Washer (X20)



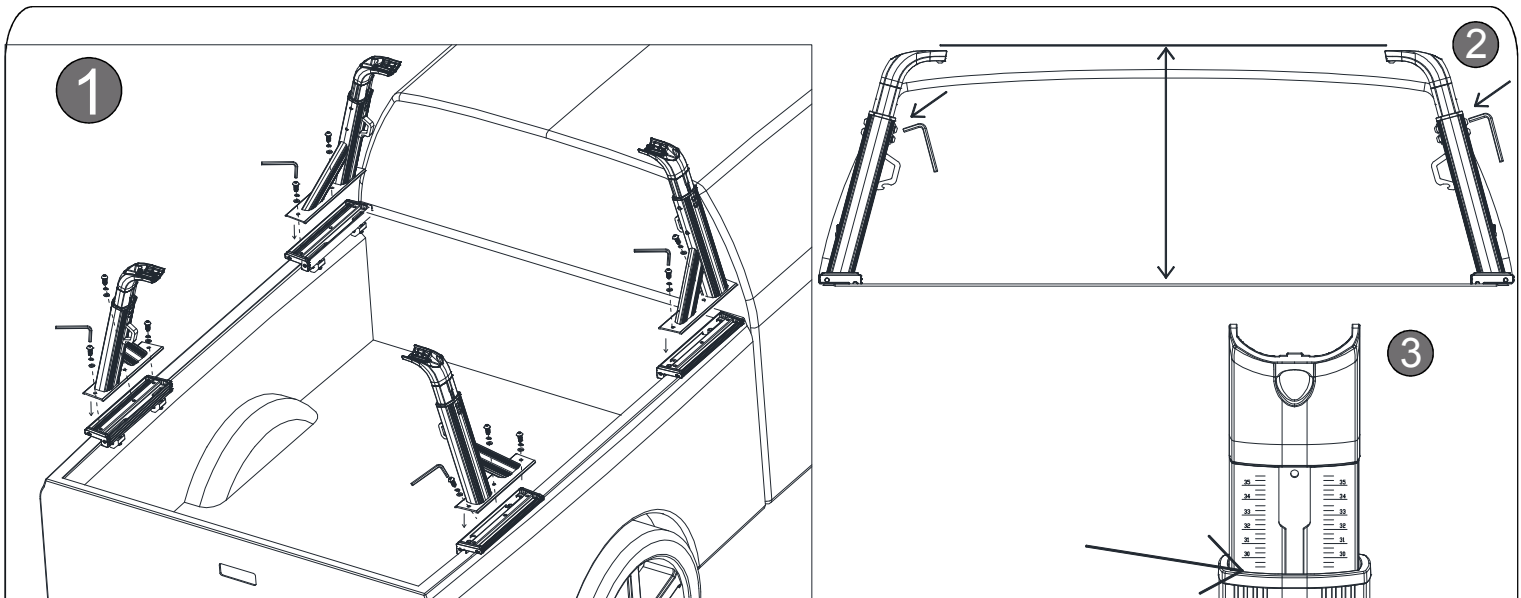
M6 Roller Shutter T Screws (X12)

## Assembly Procedure



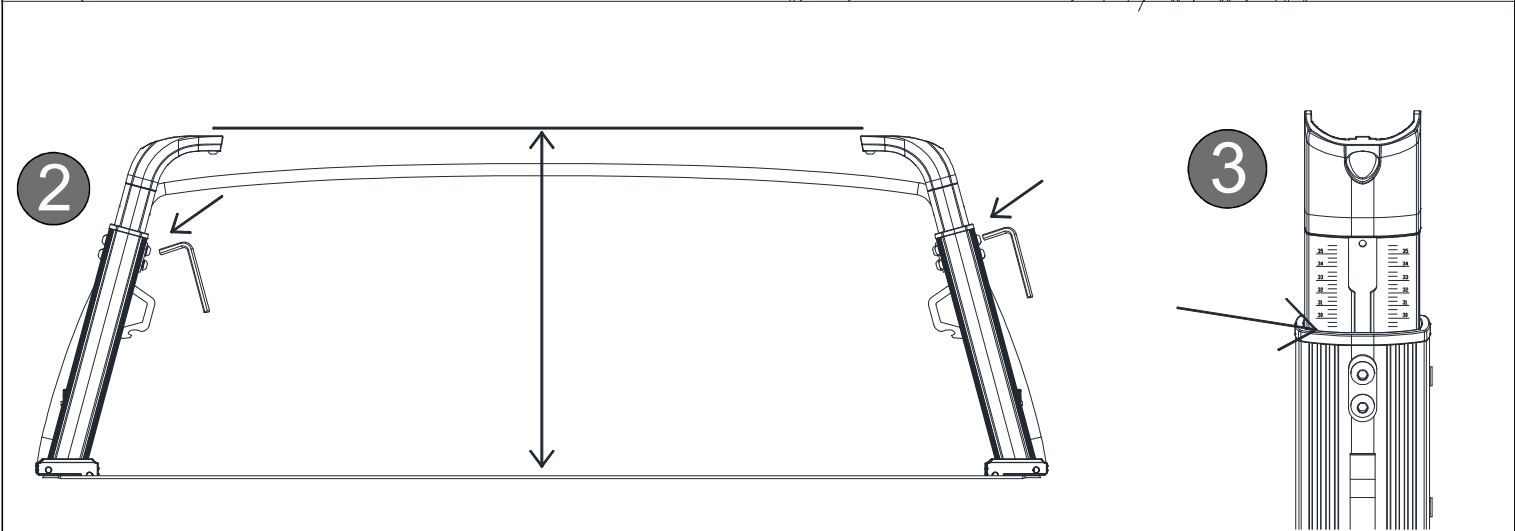
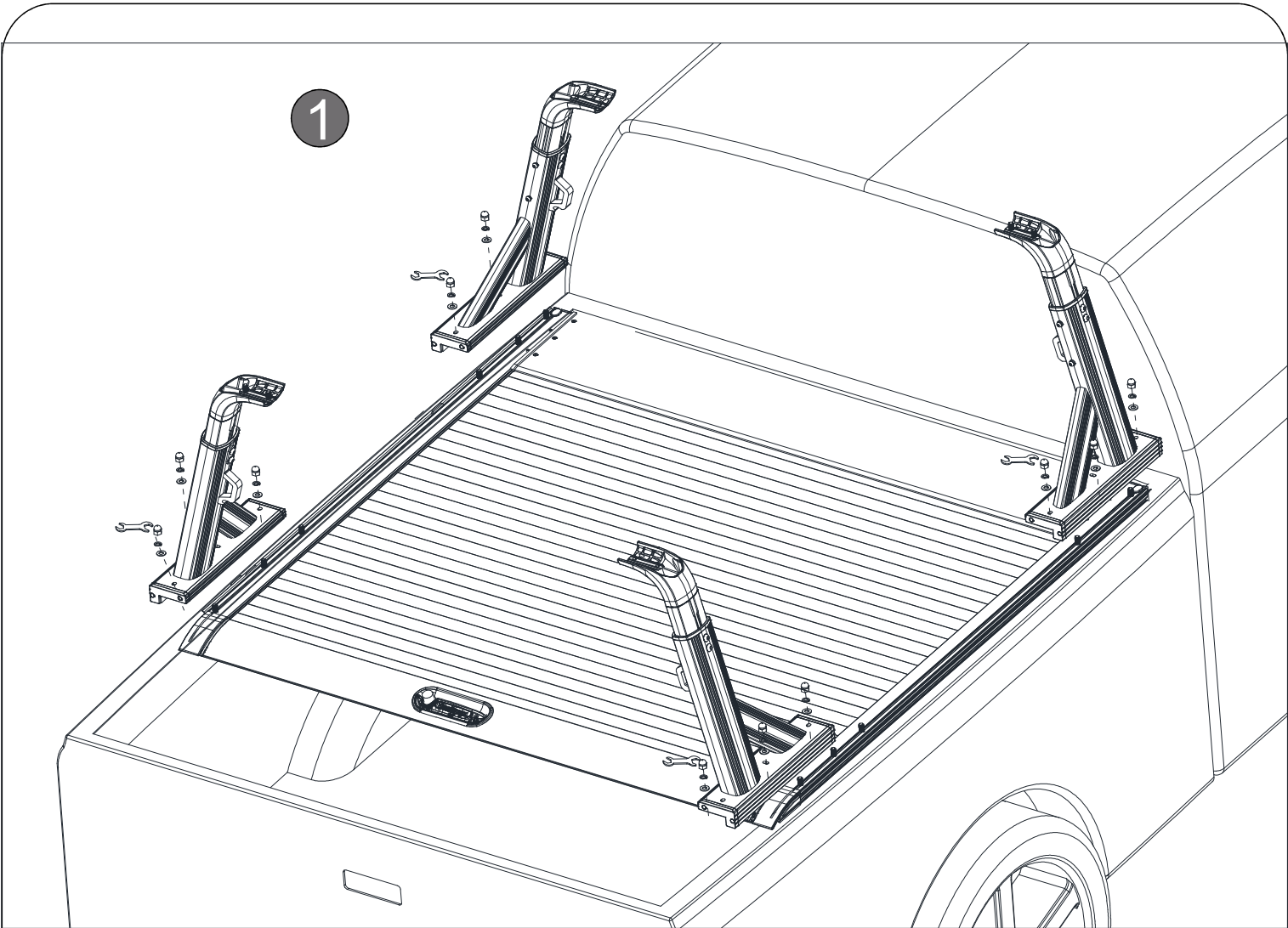
### STEP 1 : Install fixed base part

1. First put the fixed base to the corresponding position of the trunk. (As shown in the left, picture 1 )
2. Fix the base bracket with M12x50mm base screw、 M12 base screw spring washer、 M12 base screw square washer, Don't tighten the screw. Use M12 hexagon head wrench to fix the left and right bases. (As shown in the right, picture 2)
3. Adjust the consistent size and position on both sides and lock the screws with a wrench (As shown in the left, picture 1、 2)



### STEP 2 : Install base bar (Plan A)

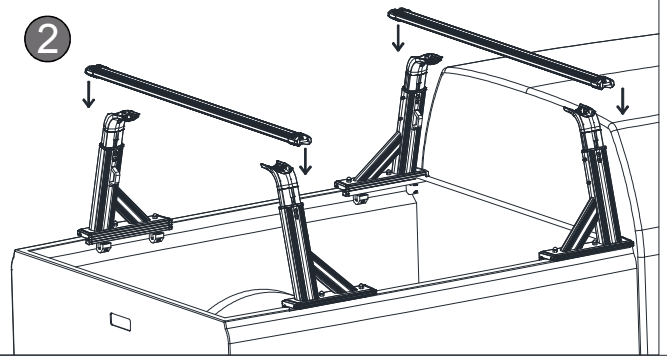
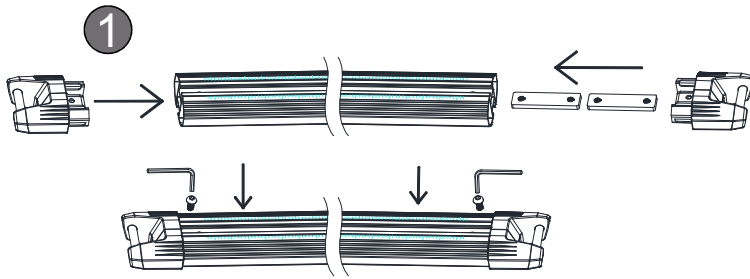
1. Install the base bar to the fixed base from top to bottom, then put M8 Cross Bar Screw Washer and M8 Cross Bar Screw Spring Washer on it. Use M8 hexagon wrench to fix M8x25mm Cross Bar Screw. (As shown in the left, picture 1)
2. The base bar can be adjusted according to different vehicle types. Loosen the screws on both sides of the base bar with M10 hexagon head wrench, then adjust according to the required height. There is a scale mark on each base bar. Adjust each base bar to the same scale and tighten with a wrench. (As shown in the right, picture 2、 3)



### STEP 3 : Install base bar (Plan B)

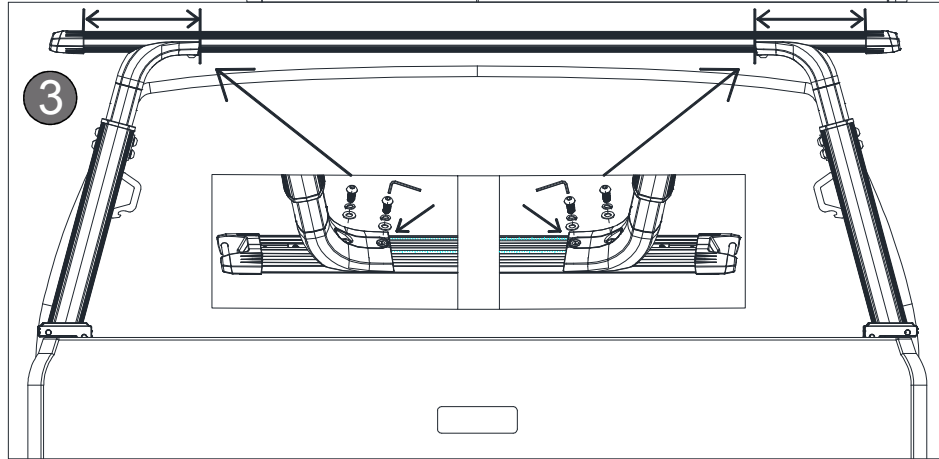
This plan is applicable to vehicles with curtain installed in rear carriages.

1. First install M6 Roller Shutter T Screws in the T slot on both sides of the car curtain, and install the fixed base and base bar to the direction of the diagram. Then align the hole position with the pre-installed T screws and place them on both sides of the curtain. Put M6 base bar screw washer and M6 base bar screw spring washer on it. Finally, tight M6 base bar masked nut with M6 hexagon wrench. (As shown in the left, picture 1)
2. The base bar can be adjusted according to different vehicle types. Loosen the screws on both sides of the base bar with M10 hexagon head wrench, then adjust according to the required height. There is a scale mark on each base bar. Adjust each base bar to the same scale and tighten with a wrench. (As shown in the right, picture 2、3)



#### STEP 4 : Install Cross Bar

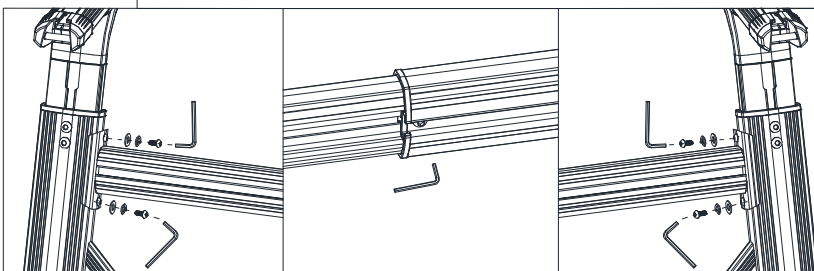
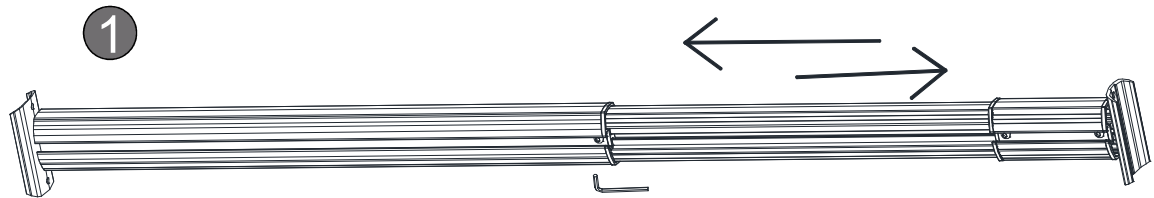
1. First, align the direction of the screw hole on one end with the graduated surface. Install to the slot corresponding to the cross bar and insert to the bottom. At the other end, install two M8 cross bar screw square gaskets into the slot marked with a scale on one side. Then install the cap into the cross bar slot. The installation method is the same as the other side. Finally, install M6 screws and fasten them with the corresponding M6 wrench.



(As shown in picture 1 on the top left)

2. Place the installed crossbar on the slot of the base bar. (As shown in picture 2 above)

3. First slide the crossbar screw square washer to align with the screw hole below the base bar. Then put the M8x20mm cross bar screw, M8 cross barscrew washer and M8 cross bar screw spring washer together. Then tight it to the screw hole opposite the base bar and cross bar. Fix with M8 hexagon head wrench. Don't tighten the screw. Adjust to the same width on both sides according to the required width. Align the two sides with the same scale data position. Finally, tight it with hexagon head wrench. (As shown in picture 3 above)



#### STEP 5 : Install Side Bar

1. Loosen the screw in the middle of the side bar with M6 hexagon head wrench, then side bar can freely adjust length (As shown in picture 1 above)

2. First put the M6x20mm side bar screw, M6 side bar screw washer and M6 side bar screw spring washer together. Then install the side bar to the corresponding screw holes position between the base bar. Tight it with M6x20mm side bar screw. Finally, tight the screw in the middle of the side bar with M6 hexagon head wrench. (As shown in picture 1 above)

